

DISCERN
HEALTH

Measuring Population Health

HSCRC
Performance
Measurement
Workgroup

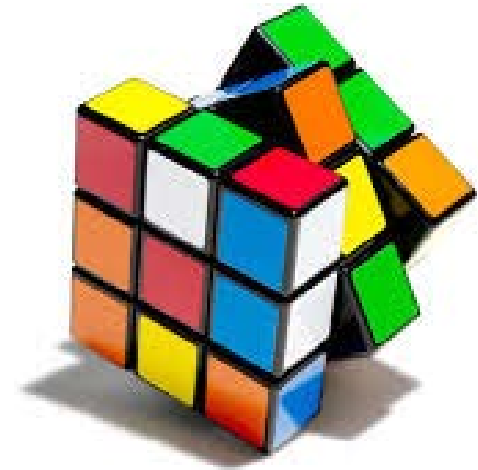
Tom Valuck, MD, JD



Discern Health
1120 North Charles Street
Suite 200
Baltimore, MD 21201
(410) 542-4470
www.discernhealth.com

Framework for Measuring Population Health

- Definitions
- Principles
- Measure Selection
- Measure Types
- Phasing



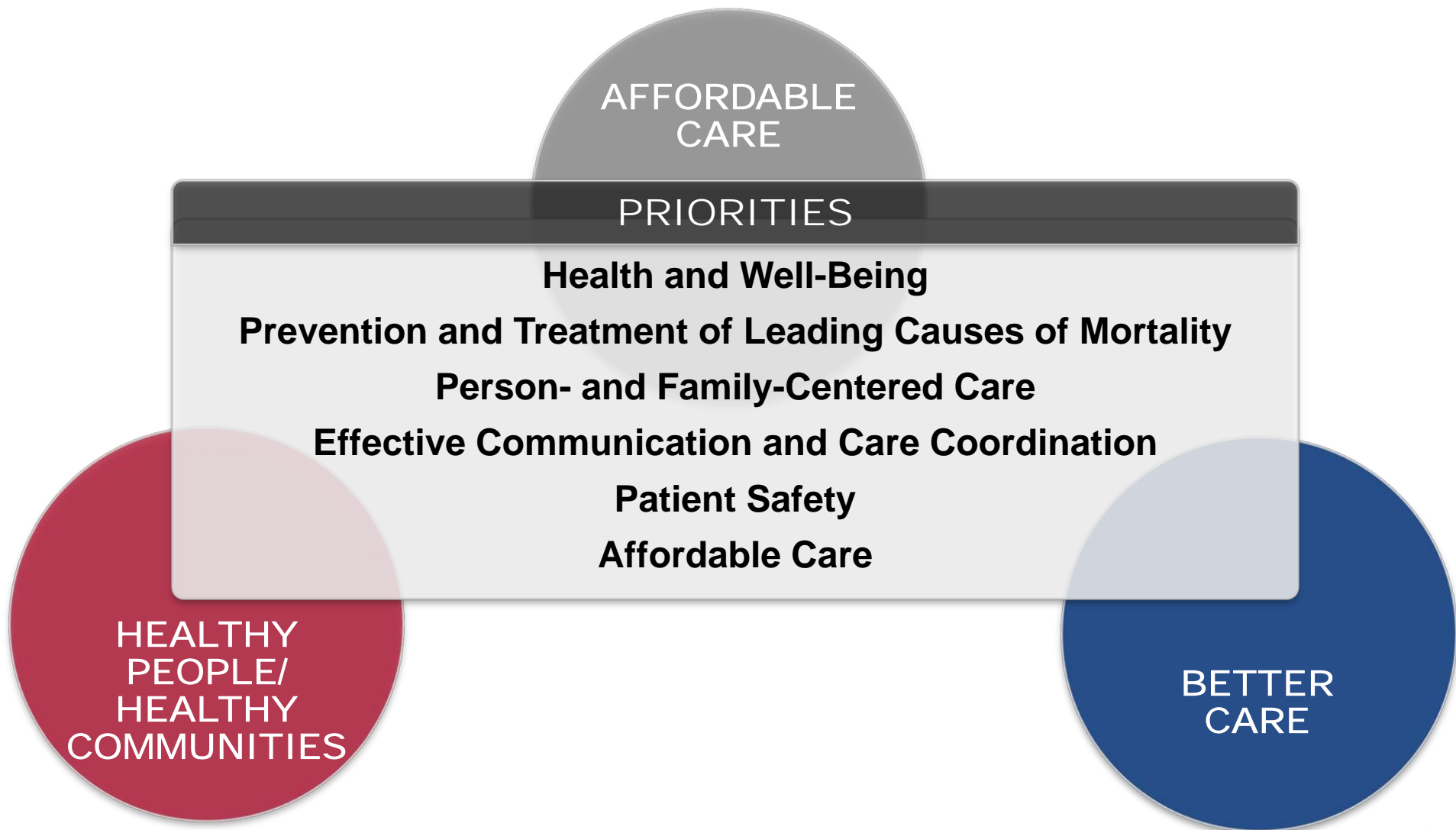
What Is Population Health?

- WHO: A state of complete physical, mental, and social well-being and not merely the absence of disease or infirmity.
- NQF commissioned paper:
 - Improving overall health status and health outcomes of interest to the clinical care system, the government public health system, and stakeholder organizations.
 - Influenced by physical, biological, social and economic factors in the environment, by personal health behavior, and by access to and effectiveness of healthcare services.

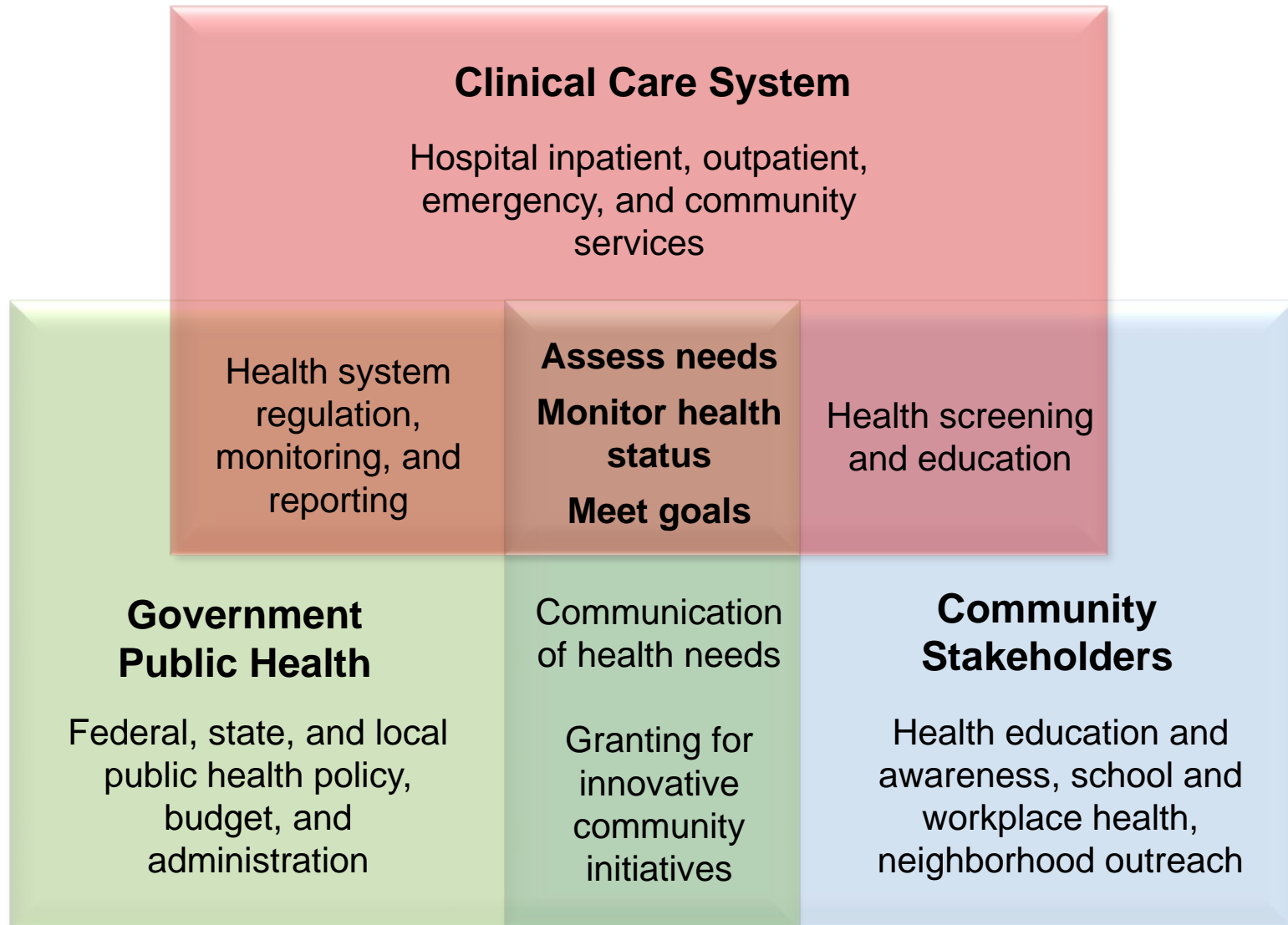
Jacobsen and Teutsh (2012)



What Is Population Health?

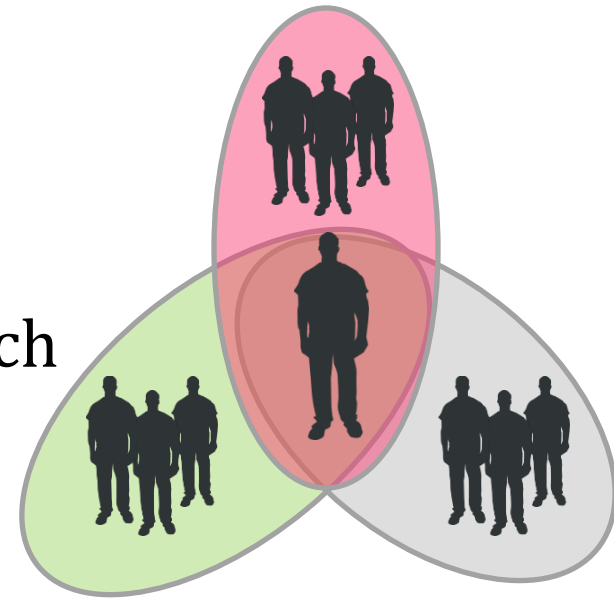


What Is Population Health?



What Is Population Health?

- ❖ For hospitals, population health may include:
 - ❑ Entire geographic area in which hospital resides
 - ❑ Entire medical neighborhood of which the hospital is a part
 - ❑ Specific demographics within total population (e.g., elderly, children, chronically ill, low-income)
 - ❑ Measures of inpatient, outpatient, and community services



Hospitals and Population Health

- ◆ Hospitals have an interest in population health management:
 - Caregivers are passionate about promoting health.
 - Length of stay, readmissions, and complications are linked to health and wellness of patients before and after hospital stay.
 - Increased policy efforts to improve care coordination between hospitals, primary care, pharmacy, entire medical neighborhood.
 - Hospital data can be used to assess community health.
 - Community health initiatives build goodwill and reinforce non-profit status.



Measure Selection: IOM Logic Model



IOM report: Toward Quality Measures For Population Health (2013)

Measure Selection: IOM Logic Model

■ Example: Influenza Vaccination

1. Goal- reduce morbidity/mortality from vaccine-preventable influenza
2. Initiative- support influenza vaccination at the community, provider, and individual levels
3. Measure- influenza vaccination rate
4. Outcome- increased number of vaccinated individuals in the community → reduced risk of preventable disease in the population

IOM report: Toward Quality Measures For Population Health (2013)



Population Health Measure Types

- ❖ Health Outcomes- high-level indicators
- ❖ Access- availability and use of services
- ❖ Healthy Behaviors- choices by individuals and communities
- ❖ Prevention- screening and early intervention
- ❖ Social Environment- health literacy and attention to disparities
- ❖ Physical Environment- built infrastructure and natural resources



Population Health Measure Types- Health Outcomes

■ Examples

- Mortality
- Longevity
- Infant mortality; low birth weight; preterm birth
- Injuries; accidents; homicide
- Suicide rate



Population Health Measure Types- Access

- Health insurance status; primary care access; access to needed services; condition specific hospital admissions

- Examples
 - (NQF #1337) Children with Inconsistent Health Insurance Coverage in the Past 12 Months
 - (NQF #718) Children Who Had Problems Obtaining Referrals When Needed
 - (NQF #277) Heart Failure Admission Rate (PQI 8)



Population Health Measure Types- Healthy Behaviors

- Addictive substances assessment and counseling; weight assessment and physical activity counseling
- Examples
 - (NQF #2152) Preventive Care and Screening and Counseling: Unhealthy Alcohol Use
 - (NQF #1656) Tobacco Use Treatment Offered at Discharge
 - (NQF #1406) Risky Behavior Assessment or Counseling by Age 13 Years
 - (NQF #421) Body Mass Index (BMI) Screening and Follow-Up



Population Health Measure Types- Prevention

- Disease and condition screening; immunizations; maternity care; newborn and child development
- Examples
 - (NQF #34) Colorectal Cancer Screening
 - (NQF #1659) Influenza Immunization
 - (NQF #278) Low Birth Weight Rate (PQI 9)
 - (NQF #1385) Developmental screening using a parent completed screening tool
 - (NQF #104) Adult Major Depressive Disorder: Suicide Risk Assessment



Population Health Measure Types- Social Environment

- ◆ Health literacy; education (e.g., graduation rate); community safety; poverty level; disparities-sensitive measures
- ◆ Example
 - (NQF #720) Children Who Live in Communities Perceived as Safe



Population Health Measure Types- Physical Environment

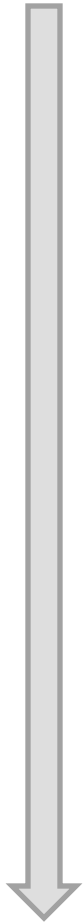
- Healthy food options, neighborhood walkability, air quality
- Example
 - (NQF 1346) Children Who Are Exposed To Secondhand Smoke Inside Home



Phasing



Progress Toward
Population Health



- Measure healthy behaviors and preventive services for hospital patients
- Assess community health needs and develop measurement strategy
- Collaborate with public health officials and community services on measuring progress in addressing community needs



Resources

- ❖ IOM report: Toward Quality Measures for Population Health and the Leading Health Indicators (2013)
- ❖ NQF commissioned paper: An Environmental Scan of Integrated Approaches for Defining and Measuring Total Population Health (2012)
- ❖ NQF report: Multi-Stakeholder Input on a National Priority: Improving Population Health by Working with Communities (2014)



Thank You

